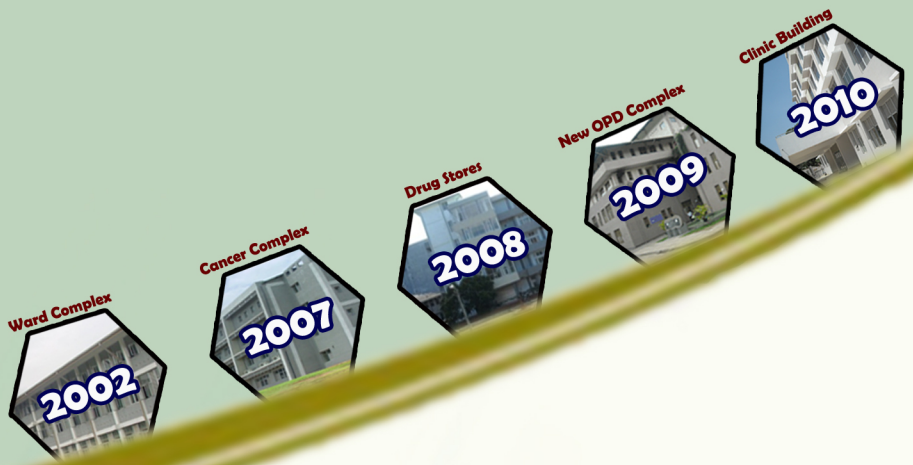




www.badullapgh.org



Our Vision - Cure & Happiness



## Provincial General Hospital - Badulla

# ANNUAL REPORT

2009 & 2010



Provincial General Hospital - Badulla  
Bandarawela Road, Badulla  
Sri Lanka

Tel : +94(0)55-2222261/2222262

Fax : +94(0)55-2231205

Email : generalhospitalbadulla@gmail.com

Web Site : www.badullapgh.org





# TABLE OF CONTENTS

Annual Report 2009 & 2010 • Provincial General Hospital Badulla • [www.badullapgh.org](http://www.badullapgh.org)

## TABLE OF CONTENTS

<b>Introduction [Vision/Mission/Timeline]</b>	<b>1</b>
<b>Specialist Clinical Services</b>	<b>2</b>
<b>Clinical /Support Services</b>	<b>3</b>
<b><u>Departmental Review</u></b>	
Department of General Medicine	4
Department of General Surgery	4
Department of Paediatrics	5
Department of Obstetrics & Gynaecology	5
Department of Anaesthesiology	6
Department of Neuro Surgery	6
Department of Ophthalmology	7
Department of Ear, Nose & Throat	7
Department of Orthopaedic Surgery	8
Department of Onco Surgery	8
Department of Oral Maxillo Facial Surgery	9
Department of GU Surgery	9
Department of Respiratory Medicine	9
Department of Radiology	10
Department of Pathology/Haematology/Microbiology	10
Department of Neurology	11
Department of Psychiatry	11
Department of Dermatology	11
Department of Rheumatology	12
Department of Cardiology	12
Department of Neonatology	13
Department of Oncology	13
Department of Out Patient [OPD]	14
Emergency Treatment Unit [ETU]	14
Department of Out Patient - Dentistry	14
Department of Orthodontics	14
Achievements & Special Activities Planned	15
Finance Review	16
Human Resources	17
Vital Statistics	18
Leading Cause of Hospitalization	20
Notification of Diseases	20
Top Ten Causes of Deaths	20
Ward and Clinic Statistics	21
Transfer Out & Local Purchase	22

Cure  
&  
Happiness



### Provincial General Hospital

Bandarawela Road, Badulla, Sri Lanka.  
+94 (0) 55-222261/62 Fax :+94 (0)55-2231205  
Email: [generalhospitalbadulla@gmail.com](mailto:generalhospitalbadulla@gmail.com)  
We are on the net @ : [www.badullapgh.org](http://www.badullapgh.org)

### Director Message



**Dr. A.L.M Nazeer**  
Director  
Provincial General Hospital – Badulla.

Tel : +94 (0)55-2222260 / Fax : +94(0) 55-22231 205

### ***“Our roots are deep”***

As the leader of the Health Care in the Province, we must respond to the evolving needs of the people of Uva and continue to improve the standards in par with the global excellence and demands. The key to fulfilling our mission is providing a full range of health care services that are not only high in quality but also accessible to all the people of Uva. The most important landmarks in the past year was the opening of our newly built OPD Complex and addition of new facilities which had an immediate positive impact on our community as well as the hospital's Performance. Patients appreciate its warm, comfortable and inviting environment.

We reach out to the community beyond the walls of the hospital as Community Clinics and Mobile Health Clinics to fulfill their Health Care needs as it is imperative as A Health Promotion Hospital and a vacuum exist at the grassroots level care in addition to providing excellent tertiary facilities.

Although a sound infrastructure and state-of-the-art technology are critical to provide an excellent tertiary health care service, I cannot over emphasize the vital role of our medical and supportive staff in this process. These skilled and caring individuals work as a dynamic team, always focus on health and well-being of their patients.

We are proud of our accomplishments as our hospital pursues its high goals.

We would like to thank the Hon. Maithripala Sirisena - Minister of Health, Hon. Nimal Siripala De. Silva – Former Minister of Health, Dr. Ravindra Ruberu - the Secretary of Ministry of Health, Dr. Upul Ajith Mendis - the Director General of Health Services and all the other officials of the ministry of health for their enduring involvement and support which have enabled our Hospital to be committed to the continuation and expansion of services in order to improve the quality of lives of the people of Uva.

**Dr. A.L.M. Nazeer**  
Director



## ABOUT US

Provincial General Hospital- Badulla (PGHB) is one of largest and busiest hospitals in the country with a focused set of tertiary specialties and a unique profile of strong local services. It is the only tertiary-care hospital in the Uva province and works actively to develop partnerships with other health care organizations, to ensure that we deliver first-class services to people in the province and beyond.

As the premier healthcare provider, it provides a full range of services which includes specialized clinical, diagnostic, emergency, intensive care, outpatient care and outreach services for over 1.3 million people in the Uva province.

The 1360 bedded hospital serves more than **650,000** patients per year and treats more than **90,000** inpatients and **550,000** out patients each year with dedicated hospital staff of 1600 including 30 consultants and 140 medical officers.

## VISION, MISSION & VALUES

### VISION

Cure and Happiness

### MISSION

Dedicated for Cure and Happiness

### CORE VALUES

**People** - We respect each person as a member of the hospital community. Involvement and teamwork determine our future.

**Service Excellence**- We are committed to our standards of service excellence and dedicated to exceeding the expectations of those we serve.

**Responsibility** We accept personal accountability for the work we do.

**Quality**- We consistently strive to provide the highest quality, safe patient care.

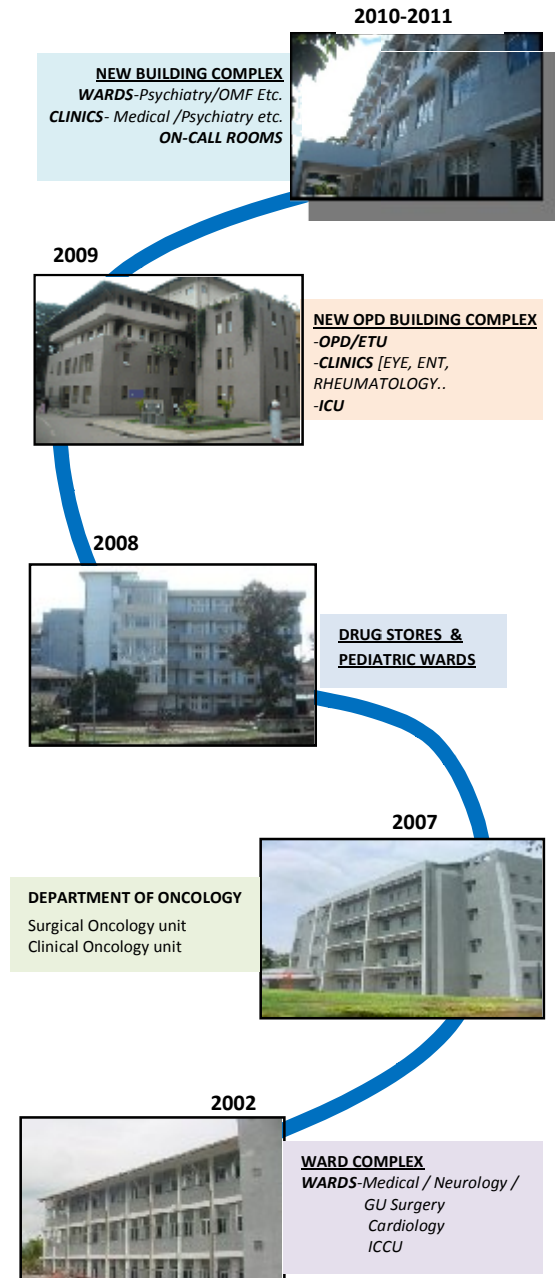
**Communication**- We promote open communication that fosters partnership and enhances timely, effective and appropriate responses.

**Innovation**- We are committed to a supportive environment that encourages new ideas and creativity.

## OUR HISTORY

The History of PGHB traces back to colonial era where it was established in 1890. In year 2000 it was incorporated to the Central Ministry

### Timeline



**SPECIALIST CLINICAL SERVICES**

YEAR 2009/10

**MEDICAL/SURGICAL DEPARTMENTS**

Medical –General	2 units
Pediatric	2 units
Gynecology & Obstetrics	2 units
Surgical –General	2 units
Neurology	1 unit
Neuro-surgical	1 unit
Dermatology	1 unit
Psychiatry	1 unit
Oncology	1 unit
Onco-surgical	1 unit
Cardiology	1 unit
Chest Medicine	1 unit
Ophthalmology	1 unit
ENT	1 unit
Orthopedic	1 unit
Genito-Urinary	1 unit
Rheumatology	1 unit
Neonatology [PBU, SPBU, GBU]	1 unit
Anesthesia	1 unit
Blood bank	1 unit
Judicial Medical	1 unit
Facio-Maxillary	1 unit

**EMERGENCY CARE DEPARTMENTS**

Intensive Care Unit <b>Medical</b>	1 unit
Intensive Care Unit <b>Surgical</b>	1 unit
Intensive Care Unit <b>Cardiac</b>	1 unit
Intensive Care Unit <b>Pediatric</b>	1 unit
High dependency unit	1 unit
Emergency treatment unit	1 unit

**DIAGNOSTIC DEPARTMENTS**

Radiology	1 unit
Pathology	1 unit
Hematology	1 unit
Microbiology	1 unit

**OUT PATIENT CARE DEPARTMENTS**

Out Patient Department	1 unit
OPD – Dental	1 unit
Orthodontic	1 unit
Clinic services	

# CLINICAL / SUPPORT SERVICES

## • OTHER CLINICAL SERVICES

### Cardiovascular Services

*\*Under supervision of Consultant Cardiologist*  
2D ECHO, Cardiac Pacing facilities and ECG, Stress ECG, Holter monitoring.

### EEG, NCS& EMG Services

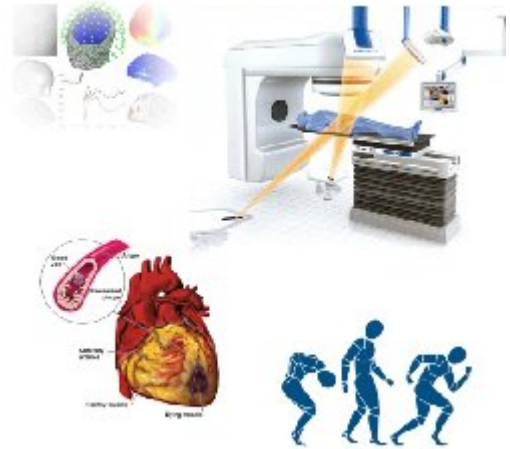
*\*Under supervision of Consultant Neurologist*

### Physiotherapy Unit

*\*Under supervision of Consultant Rheumatologist*

### Radiotherapy/ChemotherapyUnits

*\*Under supervision of Consultant Oncologist*



## • OTHER SERVICES

Infection Control unit/Health Education unit  
Quality Management Unit  
Medical Statistics and Telemedicine unit



## • SUPPORT SERVICES

Maintenance unit  
Bio-Medical unit  
Hospital Dietary service  
Central linen Supplies Department  
Sanitary Services  
Transport Service  
Telecommunication



## • OUTREACH SERVICES

Satellite psychiatry clinics weekly  
Satellite neurology clinic weekly  
Satellite laboratory service  
Diabetic screening clinics  
Medical clinic at elders' home monthly  
Thalassemia screening  
Oncology clinics monthly



## DEPARTMENTAL REVIEW

### DEPARTMENT OF

### GENERAL MEDICINE



*Dr P.L.K Abeywardhana, Consultant Physician*  
*Dr K.N.P Ranasinghe, Consultant Physician*

We provide our patients a full range of care from general health services to the most complex and specialized treatments, all within a sensitive and compassionate environment. General Medicine department is arranged into two units, each consists of two wards. One unit takes responsibility for casualty admissions in every 24 hour period.

General Medicine is responsible for 210 beds across four wards. Within General Medicine there are 2 consultant physicians who contribute to the General Medicine take.

The diabetic clinic along with diabetic Centre offers a comprehensive program that includes medical care and a diabetes self-management program with the aim of bringing latest.

#### Medicine-A

	INWARD CARE		
	Beds -88		
	Y 2008	Y 2009	Y 2010
Admissions	10396	10425	11173
Inpatient Days	47195	35083	33406
OUTPATIENT CARE			
Clinic Visits	35289	40034	33954
Clinics	100	105	102

#### Medicine-B

	INWARD CARE		
	Beds-122		
	Y 2008	Y 2009	Y 2010
Admissions	9792	9586	10061
Inpatient Days	36547	39126	40512
OUTPATIENT CARE			
Clinic Visits	45642	42497	<b>35995</b>
Clinics	105	104	95

### DEPARTMENT OF

### GENERAL SURGERY



*Dr A.K.N Dunusinghe, Consultant General Surgeon*  
*Dr S.A Gunawardhena, Consultant General Surgeon*

The General Surgery Department offers a comprehensive and high quality range of surgical procedures to the local community. A wide range of surgical procedures are undertaken as day and inpatient cases in addition to minor operations.

From a relatively simple hernia operation to a more complex procedure, our surgeons are all guided by their dedication to providing the best possible outcome for their patients.

The department functions as two units headed by two general surgeons and patients are managed through 254 bedded wards with 12 acute beds. Casualty surgical patients are admitted to casualty surgical wards and transferred to surgical /postsurgical wards for further management.

#### Surgery-A&B

	INWARD CARE		
	Beds- 254		
	2008	2009	2010
Admissions	28526	24504	23759
Inpatient Days	93527	100122	90167
OUTPATIENT CARE			
	2008	2009	2010
Clinic Visits (total)	22380	26393	24213
Clinics	197	199	187
ENDOSCOPIC PROCEDURES-2010			
Endoscopy	1192		
Cystoscopy	16		
Laparoscopy	29		
Colonoscopy	5		

## DEPARTMENTAL REVIEW

### DEPARTMENT OF PAEDIATRICS



*Dr K.R.C.P Kekulawala , Consultant Paediatrician*  
*Dr (Mrs) N.N Dissanayaka, Consultant Paediatrician*

At PGH Badulla, we've created a child-friendly environment where children feel comfortable and supported. Pediatric specialists expertly trained in nearly every field possible are dedicated to making the hospital experience positive for both children and their families.

Department of pediatrics –which consists of two pediatric units-delivers comprehensive diagnostic and treatment services for the entire range of pediatric disorders.

#### Pediatric-A 22

	INWARD CARE		
	Beds-67		
	2008	2009	2010
Admissions	4607	5296	7437
Inpatient Days	22800	22294	18230

#### OUTPATIENT CARE

Clinic Visits (total)	6487	7926	7563
Clinics	47	49	87

#### Pediatric-B -23

	INWARD CARE		
	Beds-55		
	2008	2009	2010
Admissions	4091	4288	4658
Inpatient days	13448	14949	16464

#### OUTPATIENT CARE

Clinic Visits (Total)	4891	3954	4878
Clinics	49	48	50

### DEPARTMENT OF OBS&GYN



*Dr Athula Fernando, Consultant VOG*  
*Dr S.D Abeyssekara, Consultant VOG*

The Department of Obstetrics and Gynecology –consists of two units- is a leading unit in all aspects of women's health, with recognized programs in obstetrics and gynecology.

The health and safety of every mother and child is our highest priority. Outstanding results, an excellent safety record and caring personal service have led to it becoming the first choice for women looking to create their special birth experience knowing they are fully informed, safe and in control.

The Gynecology departments provide a full range of emergency and elective gynecology services and offer general gynecology and reproductive medicine including investigations, advice and management of infertility problems.

#### PERINATAL DATA

	Y 2009	Y 2010
<b>Total Number of Deliveries</b>	<b>8195</b>	<b>8046</b>
Vaginal Deliveries	5596	5346
LSCS Deliveries	2328	2381
Forceps Deliveries	72	68
Vacuum Deliveries	199	251
<b>Total Number of Births</b>	<b>8319</b>	<b>8148</b>
Live Births	8237	8051
birth weight < 2500 g	2083	1922
<b>Total Number of Still Births</b>	<b>82</b>	<b>88</b>
IUD on admission	82	88
<b>Maternal deaths</b>	<b>4</b>	<b>6</b>
<b>LSCS Rate (%)</b>	<b>28</b>	<b>29</b>
<b>LBW Rate (%)</b>	<b>25.28</b>	<b>23.87</b>
<b>Still Birth Rate (%)</b>	<b>0.98</b>	<b>1.1</b>



## DEPARTMENTAL REVIEW

DEPARTMENT  
OF  
**ANAESTHESIOLOGY /  
INTENSIVE CARE**



*Dr B.P.K Petangoda , Consultant Anesthetist  
Dr Senaka Weerakoon, Consultant Anesthetist*

The Department of Anesthesiology provides peri-operative care for approximately 25,000 patients undergoing a variety of surgical procedures through four operating theatre units each year.

Our hospital has surgical & medical intensive care units which provide specialized care, treatment and monitoring of critically ill patients.

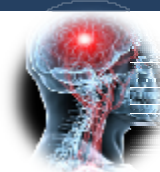
**S-ICU****INWARD CARE**

	2008	2009	2010
Beds	5	5	5
Admissions	462	447	482
Inpatient days	1679	1654	1841

**M-ICU****INWARD CARE**

	2008	2009	2010
Beds	4	4	4
Admissions	204	162	259
Inpatient days	1343	1299	1356

DEPARTMENT  
OF  
**NEURO SURGERY**



*Dr. Deepal Attanayake, Consultant Neuro Surgeon*

The Department of Neurosurgery is renowned for expertise in the field of Neurosurgery, providing comprehensive range of inpatient and outpatient care for all neurosurgical disorders, simple and complex.

With the guidance of very competent, highly talented neurosurgeon, the doctors and the staff of the department of neurosurgery offer comprehensive and multi-disciplinary care for Brain and Spinal ailments.

**NEUROSURGERY****INWARD CARE****Beds-31**

	2008	2009	2010
Admissions	348	480	1161
Inpatient days	6438	5787	8650

**OUTPATIENT CARE**

	2008	2009	2010
Clinic visits (total)	2622	3253	3126
Clinics	47	49	46

**SURGICAL DATA**

	2008	2009	2010
Surgeries (total)	87	276	421
Surgeries (major)	72	260	360

## DEPARTMENTAL REVIEW

### DEPARTMENT OF OPHTHALMOLOGY



*Dr R.W.M.R.P.B Iddawala, Consultant Eye Surgeon*

The Department of Ophthalmology provides inpatient and outpatient eye care services for the hospital's catchment area in Uva province.

As the requirements continued to grow in volume and complexity during past years, the unit went through a number of upgrades during last few years to meet the expanding requirements. These upgrades, including eye clinic being moved to new spacious building, and contribution of dedicated, experienced team of consultant, medical officers and the supportive staff of the unit have ensured the maximum patient care to the community.

In year 2010, **33716** patients were seen at the eye clinic and it was an increase of 53% compared to 2009 and this has been made possible by conducting clinics from Monday to Saturday [ 6 days a week] and through the dedication of medical staff with the enthusiastic guidance of the consultant eye surgeon.

#### EYE

##### INWARD CARE

Beds- 40

	2008	2009	2010
Admissions	3829	4217	3732
Inpatient Days	11487	12715	10676

##### OUTPATIENT CARE

	2008	2009	2010
Clinic Visits (total)	19564	21982	33716
Clinics	192	196	279

##### SURGICAL DATA

	2008	2009	2010
Surgeries (Total)	1373	936	1297
Surgeries (Major)	1274	883	1225

### DEPARTMENT OF

### EAR, NOSE AND THROAT



*Dr. J.M.R.G Jayaweera , Consultant ENT Surgeon*

The ENT Department at PGH Badulla caters not only the Uva Province but the Eastern and parts of the Central and the Sabaragamuwa Provinces. We provide professional and friendly health care to adults and children of all ages with a considerable amount of sub-specialist interests covering both medical and surgical conditions related not just specifically to the Ear, Nose and Throat, but also other areas like neck region. ENT unit also provides audiology and speech therapy service to the region. This is made possible by the support of a dedicated team headed by Consultant ENT Surgeon.

#### ENT

##### INWARD CARE

Beds-20

	2008	2009	2010
Admissions	3186	2973	2733
Inpatient Days	11417	7787	6750

##### OUTPATIENT CARE

	2008	2009	2010
Clinic Visits (total)	9802	10102	11521
Number of Clinic	146	143	143

##### SURGICAL DATA

	2008	2009	2010
Surgeries (Total)	1022	955	1017
Surgeries (Major)	438	774	497

##### ENDOSCOPIC PROCEDURES-2010

Endoscopy	66
Esophagoscopy	42
Bronchoscopy	5
Direct Laryngoscopy	137
Micro Laryngoscopy	12



## DEPARTMENT OF ORTHOPAEDIC SURGERY



*Dr. Udai de Silva , Consultant orthopedic Surgeon*

The Department of Orthopedic Surgery at PGH Badulla offers a full range of inpatient and outpatient services for both adults and children including treating disorders of the body's bones, joints, ligaments, muscles, and tendons.

The aim of the department, as teamwork, is to provide an efficient, friendly and high quality service for all our patients with the most current treatments to help patients regain mobility. We strive to ensure that patients are well informed and reassured about their treatment

### ORTHOPAEDICS

#### INWARD CARE Beds-55

	2008	2009	2010
Admissions	620	1263	1036
Inpatient days	6721	17764	17778

#### OUTPATIENT CARE

Clinic visits (total)	9037	10058	9995
Clinics	52	47	52

#### SURGICAL DATA

Surgeries (total)	1482	1327	1201
Surgeries (major)	1091	1011	884

## DEPARTMENT OF ONCO SURGERY



*Dr. A Thewarapperuma , Consultant Onco Surgeon*

Onco surgery is a division which deals with surgical management of cancers. Surgery was the earliest and most time-tested treatment modality for wide range of cancers. Surgical management of cancers requires extensive and complicated procedures, which are technically challenging and time consuming.

### Services

Management of solid tumors including Head & Neck, breast, Gastrointestinal, Soft tissue, Thoracictumors; carrying out wide variety of surgical operations; Research on Cancer behavior

### Future Goals

Development of an autologous cancer vaccine  
/To carry out minimally invasive esophagectomy /Hepatic transplantation

### ONCOSURGERY

#### INWARD CARE

	2008	2009	2010
Beds	33	33	34
Admissions	446	194	455
Inpatient days	4596	1910	6099

#### OUTPATIENT CARE

Clinic visits (total)	991	59	1232
Clinics	48	9	78

#### SURGICAL DATA

Surgeries (total)	324	-	208
Surgeries (major)	200	-	186

#### Endoscopic procedures –y 2010

Endoscopy	89
Cystoscopy	1
Laparoscopy	4



## DEPARTMENT OF ORAL MAXILLO FACIAL SURGERY



Dr .T Sabesan, Consultant OMF Surgeon

The Department of Oral and Maxillofacial Surgery (OMF) provides surgery to treat a wide variety of diseases, injuries and defects in the head, neck, face and jaws utilizing the very latest protocols, science and technology to enhance patient outcomes.

Department has achieved remarkable results treating and reconstructing complex facial deformities, trauma, and diseases. They have performed thousands of procedures with an emphasis on both function and aesthetics.

### OMF Surgery

INWARD CARE			
	Beds-20		
	2008	2009	2010
Admissions	956	833	834
Inpatient days	4490	4252	5636
OUTPATIENT CARE			
Clinic visits (total)	5240	5830	6110
Clinics	52	51	71
SURGICAL DATA			
Surgeries (total)	1316	814	1419
Surgeries (major)	184	624	160

## DEPARTMENT OF GU SURGERY

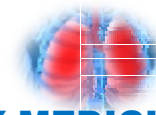


Department provides comprehensive health care for patients with different types of renal (kidney) diseases.

### GU Surgery

INWARD CARE			
	Beds-30		
	2008	2009	2010
Admissions	1051	621	486
Inpatient days	6594	6267	5434
OUTPATIENT CARE			
Clinic visits (total)	2243	1776	1037
Clinics	50	53	43
SURGICAL DATA			
Surgeries (total)	223	398	241
Surgeries (major)	155	218	179
Endoscopic procedures –y 2010			
Cystoscopy	187		

## DEPARTMENT OF RESPIRATORY MEDICINE



Dr KeerthiGunasekara/Consultant Chest Physician

### Services of the Unit

Tertiary care referral center for Respiratory diseases in the Uva Province /Complicated tuberculosis patient defaulted TB patients and very ill patients with TB & Co-morbidities /Acute exacerbation of Asthma-COPD patients /Pneumonia including poorly resolving & complicated types/Pleural effusion & empyema/Lung cancer investigation, evaluation & diagnosis /Bronchiectasis / Pneumothorax /

Lung function test with diffusing capacity /Diagnostic & Interventional Bronchoscopy /Medical Thoracoscopy & Biopsy /CT guided bronchoscopy /CT guided lung biopsy & FNAC /USS guided lung biopsy & FNAC /COPAP ventilator facility /training center for Diploma in tuberculosis & Chest diseases trainees



## DEPARTMENTAL REVIEW

### DEPARTMENT OF RADIOLOGY



*Dr (Mrs) J.P.S Wijesinghe, Consultant Radiologist*

The Department of Radiology at PGH Badulla provides medical imaging, non-invasive and interventional radiology services to diagnose and treat disease 24 hours, 7 days a week via a dedicated and efficient team of doctors and supportive staff under the guidance of the talented consultant radiologist.

Operational round the clock, it not only serves the diagnostic needs of all other departments in the hospital but caters to the diagnostic requirements of most of the neighboring Hospitals.

The Department of Radiology is highly specialized and provides the most important advances in state-of-the-art technology to patients ranging from simple x-rays to the Computerized Tomography Scanning.

#### RADIOLOGY

	Y 2008	Y 2009	Y 2010
US Scan	6200	7424	8808
CT Scan	7029	7755	9705
US/CT guided biopsy	110	130	93
Ba studies	275	162	194
IVP	411	366	287
MCUG	46	50	23
Angiogram	19	7	4
HSG	14	15	34
RPG	8	6	4
PTC	2	1	0
PCN	8	7	8
Other	76	117	133
X-Ray	67890	68409	67663
<b>Total</b>	<b>82088</b>	<b>84449</b>	<b>86956</b>

### DEPARTMENT OF PATHOLOGY/ HAEMATOLOGY/ MICROBIOLOGY



*Dr (Mrs) C.P.S Sosai, Consultant Pathologist*  
*Dr (Mrs) V. Gunawardhene, Consultant Hematologist*  
*Dr G.R Ranasinghe, Consultant Microbiologist*

#### LABORATORY INVESTIGATIONS

	Y 2008	Y 2009	Y 2010
Hematology	198472	192972	194561
Special Hematology	5746	5936	5905
Serology & Aspirated fluid	5487	7571	7129
Bacteriology	62922	56778	49845
Biochemistry	311411	296035	230348
Clinical Pathology	43405	44173	47331
Number of FNAC	4357	5100	3390
Histology specimens	8967	8112	6378
<b>Total</b>	<b>640767</b>	<b>616677</b>	<b>544887</b>

The laboratory service at PGH Badulla is the largest of its kind in the province. Our specialists provide full clinical laboratory services for all specialties. We are particularly strong in Pathology/Hematology/Microbiology/Biochemistry

In addition to the services provided to the hospital, our laboratory extends the satellite services to peripheral hospitals of the province in order to strengthen the laboratory facilities of them and we have achieved the desired goals of launching the project.



## DEPARTMENTAL REVIEW

### DEPARTMENT OF NEUROLOGY



*Dr. Y.V.N.D Sirisena , Consultant Neurologist*

The Department of Neurology provides comprehensive outpatient and inpatient services for the full spectrum of neurological conditions. In addition to providing neurological services to the patients of Badulla and surrounding areas, the Department provides outreach clinics to patients who have no direct access to the care.

#### Services of the Unit

1. Neurophysiological Service to Entire Province
2. Inward Neurological Care
3. Neurology Out-Patient clinic
4. Outreach Clinic - (Mahiyangana/ Monaragala/ Diyathalawa/ Bibile)
5. Botulinum toxin clinic for Focal Dystonia / Spasticity

#### Future Goals

##### A. Stroke Care

1. To initiate a stroke unit for rehabilitation of stroke patients
2. Acute Stroke care service

##### B. Tertiary care epilepsy clinic

Advance management of patients with refractory epilepsy

#### NEUROLOGY

##### INWARD CARE Beds-33

	2008	2009	2010
Admissions	1691	1448	1143
Inpatient days	10196	8833	7383

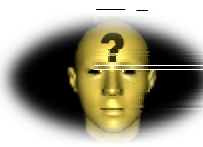
##### OUTPATIENT CARE

Clinic visits (total)	8987	9458	10621
Clinics	97	98	96

##### INVESTIGATIONS

NCS	} 925	1014	504
EMG			
EEG	1522	1380	2102

### DEPARTMENT OF PSYCHIATRY



*Dr P.M Pandithasekara-Consultant Psychiatrist*

The Department of Psychiatry offers a complete range of clinical services –inpatient and outpatient services-to the population of Badulla district and beyond. Our specialists have expertise in psychiatry and extend their outpatient services to the remote community through satellite clinics.

#### Services of the department

In ward patients care/ Mental health Clinics / Alcohol Clinic / Peripheral Clinic/ Home visit for difficult psychiatric patients who has poor drug compliance/ working with psychosocial forum/ Social Service provide by psychiatric social workers.

#### PSYCHIATRY

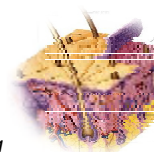
##### INWARD CARE Beds-39

	2008	2009	2010
Admissions	1062	1023	948
Inpatient days	11959	12337	10905

##### OUTPATIENT CARE

Clinic visits (total)	13087	12656	12992
Clinics	209	207	208

### DEPARTMENT OF DERMATOLOGY



*Dr. (Mrs) T.D.P Lokunarangoda  
Consultant Dermatologist*

We provide a comprehensive range of dermatology services to the community through both inpatient and outpatient services.

#### DERMATOLOGY

##### INWARD CARE Beds-23

	2008	2009	2010
Admissions	778	936	631
Inpatient days	3575	4028	3069

##### OUTPATIENT CARE

Clinic visits (total)	20759	20232	18801
Clinics	193	188	184



## DEPARTMENTAL REVIEW

YEAR 2009/10

DEPARTMENT  
OF  
RHEUMATOLOGY

Dr (Mrs) S.H Monika De Silva /Consultant  
Rheumatologist

The Department of Rheumatology provides modern treatment facility for patients with arthritis-related disease through inpatient and outpatient services.

**Service of the Unit**

All patients with Rheumatological condition such as inflammatory arthritis ,Connective tissue diseases,Vasculitis ,osteoarthritis ,Soft tissue rheumatism ,regional pain syndromes, fibromyalgia, neck & Back pain are seen and analyzed on outpatients as well as inward basis. Rehabilitation of patients with neurological conditions, arthritis, pain syndromes cerebral palsy.

Kandagolla rehabilitation unit is supervised by the consultant with two weekly visits on Mondays.

Daily Physiotherapy is provided by the physiotherapy unit which is a sub department of our unit.

Inward patient management is done in Ward 32 where ten beds are allocated for patients who need admission to the hospital.

**RHEUMATOLOGY****INWARD CARE  
Beds-10****OUTPATIENT CARE**

Year	2008	2009	2010
Clinic visits (total)	22194	19233	17947
Clinics	206	207	208

**Physiotherapy unit**

New Patients	4759	4619
Outdoor Patients	11371	11298
Indoor Patients	13106	17623

DEPARTMENT  
OF  
CARDIOLOGY

Dr.Chinthaka Hathlahawaththa/Dr Mayuradan  
Dr. Ajith Kularathna/ Consultant Cardiologist

The Cardiology Department provides a diagnostic and treatment service for patients referred with heart disease. The service comprises outpatient facilities, inpatient provision, a comprehensive range of non-invasive investigational facilities [e.g. **2D ECHO, Holter monitoring / exercise ECG**],invasive procedures [e.g. **pericardial aspiration**] and range of interventional cardiology procedures [e.g. **insertion of TPM**]

Cardiology department conducts four different types of clinics including **cardiac rehabilitation clinic** (especially for patients with myocardial infarction) and heart failure clinic.

The Cardiology Department caters for patients from Uva and adjacent provinces. The Cardiology department has a 5 bed ICU, a 4 bed Intermediate facility and a 20 bed ward.

**CARDIOLOGY****INWARD CARE  
Beds-29**

Year	2008	2009	2010
Admissions	1057	763	630
Inpatient days	2295	3515	2876

**OUTPATIENT CARE**

Clinic visits (total)	11262	11011	11709
Clinics	101	94	101

**INVESTIGATIONS**

ECHO	8914	8940	6784
Exercise ECG	560	435	374
Holter monitoring	180	209	115
ECG	39318	46230	47163

# DEPARTMENTAL REVIEW

## DEPARTMENT OF NEONATOLOGY



Dr (Mrs) Romanie Rodrigo /Consultant Pediatrician

Department of Neonatology provides comprehensive care for premature and full-term infants with a complex of neonatal problems.

Our dedicated team of doctors and supportive staff are able to provide continuous monitoring, investigations and specialized medical and nursing care for these newborns.

PBU				
INWARD CARE				
Year	2008	2009	2010	
Beds	12	12	13	
Admissions	372	265	310	
Inpatient days	3858	3455	3915	

SPBU				
INWARD CARE				
Year	2008	2009	2010	
Beds	14	14	16	
Admissions	934	966	919	
Inpatient days	5803	7081	7547	

GBU				
INWARD CARE				
Year	2008	2009	2010	
Beds	9	9	10	
Admissions	208	286	261	
Inpatient days	3009	2923	2789	

### Growth & Development Clinic- Year 2010

Total Clinic Held	Clinic visits (total)
98	5034

## DEPARTMENT OF ONCOLOGY

Dr.Shama Goonatillake  
Consultant Clinical Oncologist



The Department offers comprehensive cancer treatments for patients with solid tumors and hematological malignancies under the dedicated leadership of the consultant.

### ACHIEVEMENTS

- ✚ **No waiting list for Radiotherapy or for Chemotherapy**
- ✚ **Radiotherapy audit weekly**
- ✚ Separate pharmacy for the unit
- ✚ Management of leukemia patients
- ✚ Meetings –intra unit(monthly) / with administration (quarterly)
- ✚ Conversion of existing CT scanner to planning CT with minimal cost / designing of flat couch top(Rs 800) , shoulder retractor(Rs 250) and hip movement restrictor with no cost
- ✚ Provision of physiotherapy and addressing nutritional aspects in all patients @ cancer.

### FUTURE GOALS

- ✚ **To establish carers groups** to provide social, financial and psychological support to patients and to have public participation in cancer control.
- ✚ **To establish** Iodine therapy unit/Brachytherapy unit/Colostomy care unit
- ✚ **Simulator** for radiotherapy planning.
- ✚ **Workshops for** Palliative care/communication skills /radiation protection

### ONCOLOGY

INWARD CARE				
Beds-71				
Year	2008	2009	2010	
Admissions	1564	1457	1547	
Inpatient days	17590	17790	17521	

OUTPATIENT CARE				
Year	2008	2009	2010	
Clinic visits (total)	11282	11209	14158	
Clinics	95	100	99	

RADIOTHERAPY/CHEMOTHERAPY				
Average number of patients treated per day				
Chemotherapy	10	9	10	
Radiotherapy	27	22	26	



## DEPARTMENTAL REVIEW

### DEPARTMENT

### OUTPATIENT [OPD]

*Dr A.G.H Sugathapala ,Consultant Physician*

We aim to provide a consistent, effective and friendly service to our patients, their relatives, friends and carers and to make your visit to the outpatient department as comfortable as possible. The spacious unit consists of an admission room, examination and consulting rooms, pharmacy, dressing, injection rooms and it affords seating accommodation for 400 patients.

#### OPD

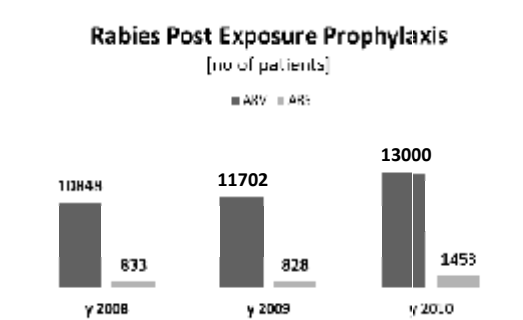
	Y 2008	Y 2009	Y 2010
visits (total)	184758	236635	248762
visits (First)	172700	226818	239193
Average per day	596	793	832

### EMERGENCY TREATMENT UNIT

We deliver emergency and acute care to all patients who arrive in the ETU at PGH Badulla. Our emergency treatment unit offers assessment and any initial treatment of all patients, including treatment of heart attacks and strokes, as well as respiratory problems, overdoses /poisoning, bites and stings.

#### *Rabies Post Exposure Prophylaxis*

	Year 2009 no patients	Year 2010 no patients
ARS	828	1453
ARV		
2 site	9872	10171
8 site	1830	2829
Total	11702	13000
<b>Total</b>	<b>12530</b>	<b>14435</b>



### OUTPATIENT DEPARTMENT OF DENTISTRY

The outpatient department of dentistry of PGH Badulla has been providing its various services to the community and we have achieved almost all the treatment facilities to provide good oral and dental health care to the community. The number of patients flow and treated has been increasing remarkably every year.

#### OPD-DENTAL

#### OUTPATIENT CARE

Year	2008	2009	2010
Clinic visits (total)	18732	19500	19740
Clinic visits (First)	16062	16265	17577
Average per clinic	61	63	64

### DEPARTMENT OF ORTHODONTICS

*Dr Mrs G.L Chandra /Consultant Orthodontist*

Achieving healthy smiles is a team effort that involves the orthodontist, the patient, and as needed, other specialists. The orthodontist provides the expertise, the treatment plan, and the techniques to straighten teeth and align the jaws. Orthodontic treatment is not quick and requires a commitment from each patient.

We provide specialist services for children and adults requiring correction of their mal-aligned teeth and jaws. We offer orthodontic treatment as outpatient basis to people living in Uva province and surrounding areas.

#### Orthodontic Clinic

#### OUTPATIENT CARE

Year	2008	2009	2010
Clinic visits (total)	172	715	3439
Clinic visits (First)	75	174	380
Average per clinic	8	6	48

## ACHIEVEMENTS

### Major achievements during year 2010

#### 1. **New OPD Building –completion of work and start functioning**

\*Ground floor- OPD/ETU/  
 \*First floor- EYE clinic, ENT clinic, OMF clinic  
 Rheumatology clinic /Physiotherapy unit  
 \*Second floor- Auditorium/paying wards  
 \*Third floor -Intensive care unit /Operating theatres for Neurosurgery,orthopedic,ENT,OMF and casualty theatre



#### 2. **Extension of Drug stores (stage II)**

#### 3. **Completion of construction of new complex for mental health unit, OMF/Orthodontic/dental units, and Clinic services**

#### 4. **Installation of New Transformer 640KV for New OPD Building**

#### 5. **Installation of Power Distribution Panels**

#### 6. **Construction of Semi-Permanent Building for medical officers**

#### 7. **Selected to the final round of health excellence award 2010 under category 1**

#### 8. **Phaco Machine for eye unit**

#### 9. **Theatre B repair**

#### 10. **renovation of eye theatre**

#### 11. **Setting up HDU with 3 beds**

#### 12. **Reorganizing waste disposal system**

#### 13. **Repair of incinerator and minimize area pollution**

#### 14. **Reorganization of ICU care with 9 beds**

#### 15. **Quality award-Certificate of Commendation – 2009/**

#### 16. **Awards to appreciate our services**



**“Suwa Muthuhasara-Uva 2010”**

## SPECIAL ACTIVITIES PLANNED FOR 2011

- **Enhancing the quality of services**
- **Establishment of new units**
  - GI Surgery unit
  - Stroke unit
  - Preliminary care unit
  - Isolation ward /colostomy care unit
  - Radioiodine therapy unit
  - Brachytherapy unit
- **To function new four Operating Theatres in the new OPD building**
  - (Require Neuro-surgical equipments /orthopedic theatre equipments /ENT theatre equipments /OMF theatre equipments /Anesthetic equipments)
- **To function Onco-Operating Theatre**
  - (Require Onco operating theatre equipments)
- **To function ONCO-ICU**
  - (Require ICU equipments)
- **To function Neuro-Surgical ICU**
  - (Require ICU equipments)
- **To function Neonatal ICU**
  - (Neonatal ICU equipments)
- **Extending diagnostic services**
  - MRI Scan/Mammogram facility
- **Extending backup services**
  - Maintenance/orthopedic workshop/BME unit/occupational therapy
- **To install Lift**
  - (For ward 23 and 22 \*pediatric wards)
- **To perform major repairs**
  - (Ward 22 roof / OT-A roof /sewerage system repair/ incinerator repair)
- **To install Wall Suckers and Wall Oxygen**
  - (For surgical/pediatric/medical units)
- **To install Generator**
  - (For OPD Building (in progress)/Cancer unit)
- **Doctors lounge/library with internet access**
- **To establish a Bleeding room near the lab**
- **Shifting new pediatric unit/New thalassemia unit to new building**
  - (Extension of Drug stores)
- **To extend oxygen supply to new plant room**
- **To increase capacity of medical plant room**





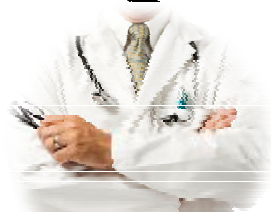
**FINANCIAL REVIEW****YEAR 2009/10**

<b>Capital Expenditure (Rs.)</b>	<b>Year 2010</b>
Building Maintenance	7,041,051
Maintenance of Electricity	10,778,174
Maintenance of Vehicles	2,866,282
Office Equipment	5,433,315
Medical and lab equipment	8,905,071

<b>Recurrent Expenditure (Rs.)</b>	<b>Year 2010</b>
Staff Salary	341,488,264.55
Extra duty Doctors	
Overtime Nurses	184,387,696.11
Overtime Other Staff	
Other Allowances	139,328,577.15
Loan	15,402,109.00
Travailing Allowances (Doctors)	
Travelling Allowances (Nurses)	3,276,424.02
Travelling Allowances (Other Staff)	
Stationary	1,737,287.50
Fuel	8,293,766.11
Foods & Uniforms	28,639,374.07
Other Supplies	3,063,997.75
Repair of Vehicles	1,794,810.75
Repairing of Machines	660,649.96
Building Repairs	873,410.25
Telephone & Postal	1730,640.01
Electricity	37,566,376.45
Water	17,972,999.68
Tax Charges	744,113.08
Laundering	4,346,765.50
Security & Cleaning	26,747,138.94
Loan Interest	12,550,814.74
Medical Gases	8,934,796.02
Medical Supplies	25,880,584.82

# HUMAN RESOURCES

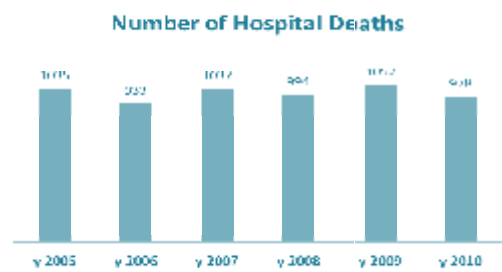
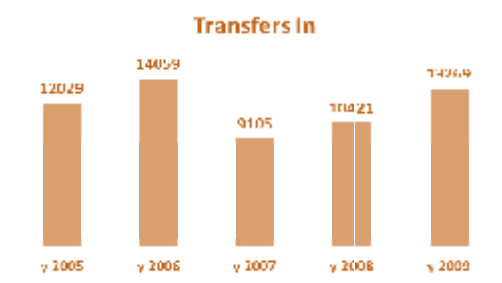
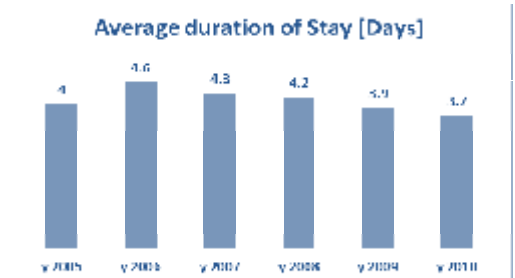
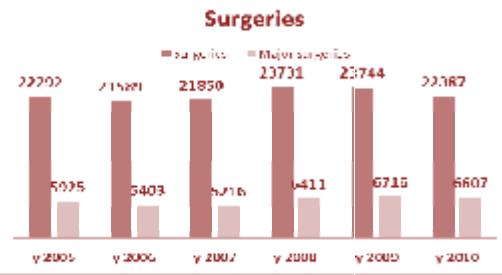
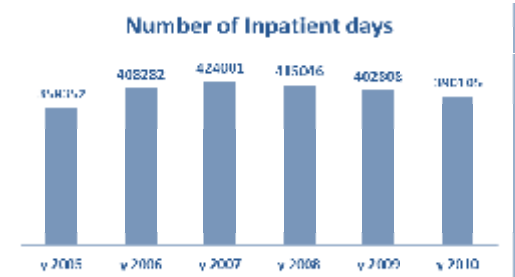
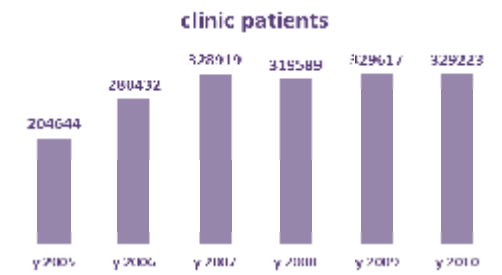
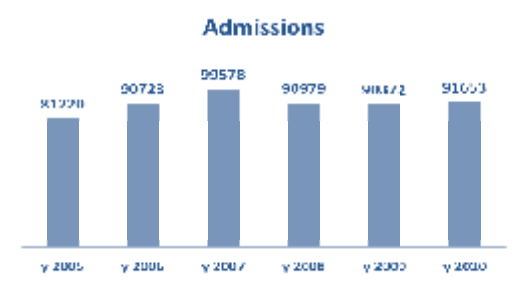
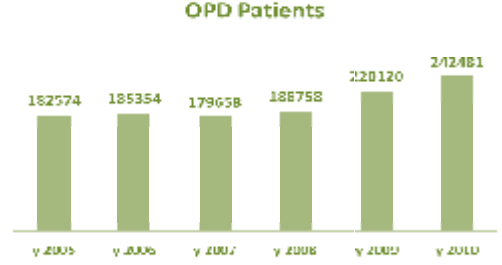
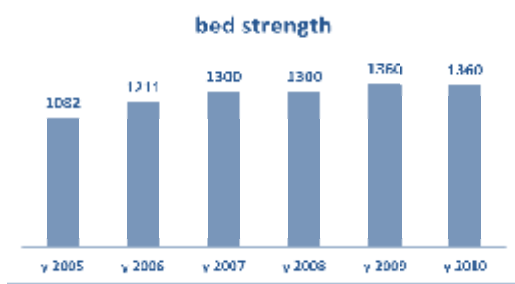
## YEAR 2009/10



<b>DOCTORS</b>	Year 2006	Year 2008	Year 2010
<b>ADMINISTRATIVE GRADE</b>			
<i>Administrative Grade MOO</i>	1	2	1
<b>SPECIALIST GRADE [CONSULTANTS]</b>			
<i>General Physician</i>	2	2	3
<i>General Surgeon</i>	2	2	2
<i>Pediatrician</i>	2	2	2
<i>V.O.G.</i>	2	2	2
<i>Cardiologist</i>	1	1	1
<i>Neurologist</i>	1	1	1
<i>Anesthesiologist</i>	2	2	2
<i>ENT Surgeon</i>	1	1	1
<i>Eye Surgeon</i>	1	1	1
<i>Psychiatrist</i>	1	1	1
<i>Radiologist</i>	1	1	1
<i>Dermatologist</i>	1	2	1
<i>Hematologist</i>	1	1	1
<i>Rheumatologist</i>	1	1	1
<i>Orthopedic Surgeon</i>	1	1	1
<i>Neuro Surgeon</i>	1	1	1
<i>Chest Physician</i>	1	0	0
<i>Neonatologist</i>	1	1	1
<i>Pathologist</i>	1	1	1
<i>Microbiologist</i>		0	1
<i>Oncologist</i>	1	1	1
<i>Onco Surgeon</i>	1	1	1
<i>JMO</i>	1	1	1
<i>Uro-Surgeon</i>	1	0	1
<i>Orthodontist</i>	0	0	1
<i>O.M.F. Surgeon</i>	1	1	1
<b>GRADE - MEDICAL</b>			
<i>Medical officer- Gr.1</i>	2	2	2
<i>Medical officer -Gr.2</i>	133	139	144
<b>DENTAL SURGEON GR1/2</b>	9	11	14

	Year 2006	Year 2008	Year 2010
HMAS-Supra Grade	1	0	1
Accountant	1	1	1
<b>Nurses</b>			
<i>Nurses Special Grade</i>	2	5	4
<i>Nurses-Grade 1 (Sister)</i>	14	13	13
<i>Nurses-Grade 1 (Supern)</i>	53	66	51
<i>Nurses- Grade 11 (A&amp;B)</i>	424	424	494
Hospital Midwife	35	32	32
<b>Paramedical staff</b>			
<i>Pharmacist</i>	20	22	27
<i>MLT (Special Grade)</i>	1	1	1
<i>MLT</i>	19	20	25
<i>Physiotherapist</i>	5	7	9
<i>Radiographer</i>	7	9	12
<i>E.C.G. Recorders</i>	5	5	7
<i>E.E.G. Recorders</i>	2	1	2
<i>Microscopist</i>	1	1	1
<i>Ophthalmic Technician</i>	3	5	6
<b>HMAS</b>			
<i>HMAS- Grade 1</i>	7	5	5
<i>HMAS- Grade 2 (A &amp;B)</i>	22	28	27
Ward Clerk	7	6	5
MRA	1	1	1
Development Assistant	6	6	6
Data Entry Operator	0	4	4
Diet Stewardess	2	2	2
Hospital Overseers	4	2	2
Driver	16	19	21
Attendant-Hospital	68	59	51
Telephone Operator	3	2	2
Pump Operator	1	1	0
Plant Supervisor	1	1	0
Cook	8	8	6
Seamstress	3	2	2
Lab Orderly	6	7	7
<b>Laborers</b>			
<i>Ordinary Laborers</i>	122	109	446
<i>Sanitary Laborers</i>	291	301	237
<i>Substitute Laborers</i>	25	46	19
Watcher	2	2	2
Carpenter	1	1	1

# VITAL STATISTICS

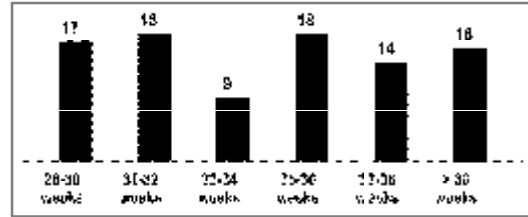


# Perinatal / Maternal Data VITAL STATISTICS

YEAR 2009/10

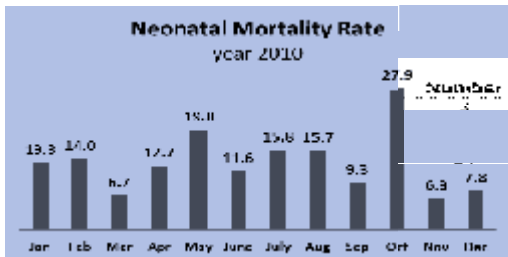
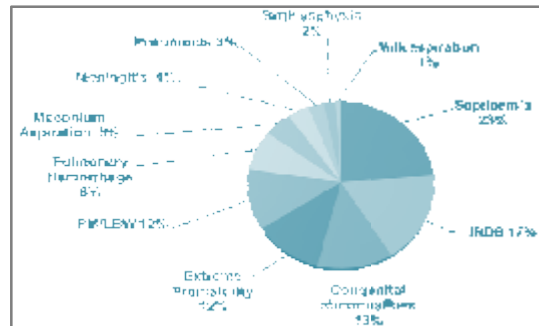


### Still Births – year 2010

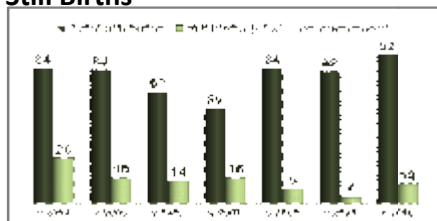


Cause of death	Number
Asphyxia	3
Developmental	1
Hyaline Membrane	1
Fresh stillbirth	27
Intoxication	3
Multiple Congenital Abnormality	3
Placental insufficiency	1

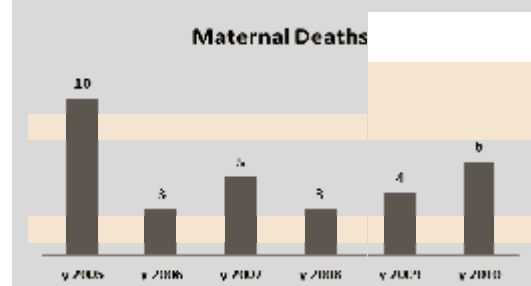
### Neonatal Deaths [causes] – year 2010



### Still Births



## MATERNAL DEATHS



### Maternal death causes -year 2010

- Burn Injuries – 3 cases
- Extra Gonadal Yolk Sac Tumor- 1 case
- Placenta Accreta -1 case
- Uncertain-1 case

### Maternal death causes -year 2009

- Dilated cardio myopathy- 1 case
- ICH (rupture of aneurysm) - 1 case
- Dengue hemorrhagic shock- 1 case
- Viral Hepatitis - 1 case



**CAUSES OF HOSPITALIZATION/DEATHS**

YEAR 2009/10

**TOP TEN  
CAUSES OF  
HOSPITALIZATION**

CAUSES OF HOSPITALIZATION	NUMBER
Persons encountering health services for examination, investigation and for specific procedures of health care	7162
Single spontaneous delivery	5816
Other complications of pregnancy and delivery	3800
Fractures	3380
Other viral diseases (includes viral fever)	3303
Other diseases of the respiratory system	2902
Symptoms and signs involving the digestive system and abdomen	2770
Other diseases of skin and subcutaneous tissue	2695
Superficial injury	2293
Other diseases of the eye and adnexa	1752

**NOTIFICATION  
OF  
DISEASES**

DISEASE	CASES	DEATHS
Dengue fever	1184	6
Dysentery	31	
Leptospirosis	30	
Whooping cough	1	
Tuberculosis	121	
Typhus fever	60	
Hepatitis-A	77	
Meningitis	32	
Encephalitis	1	
Typhoid Fever	36	
Simple Continuous Fever	2	
AFP	3	
Rabies	0	
Malaria	4	
Chicken pox	40	
Mumps	6	
Food Poising	34	
Other (H1N1)	9	
<b>Total</b>	<b>1671</b>	<b>6</b>

**TOP TEN  
CAUSES OF  
HOSPITAL DEATHS**

CAUSES OF DEATHS	NUMBER
Septicemia	65
Acute myocardial infarction	55
Intracranial injuries	50
Cerebrovascular disease	37
Heart failure	32
Bronchitis, emphysema and other COPD	32
Renal failure	31
Alcoholic liver disease	27
Pneumonia	24
Malignant neoplasm of trachea, bronchus and lung	23



## WARD STATISTICS

(Y 2010)(Y 2010)



	Inpatients Days	Admissions + Transfer In	Beds	Death Rate	* BOR %	** ADOS (Day)
1-Medical	21491	6689	60	1.9	98	2.8
2-Medical	19021	6029	62	1.3	84	3.2
Mothers unit	1713	148	8	0.0	59	12.1
6-Preist	1309	294	12	0.7	30	4.5
7-Surgical	27989	14237	54	0.3	142	2.0
8-Surgical	15328	2979	52	0.6	81	5.1
9-Surgical	13406	3054	52	0.6	71	4.4
10-Surgical	15915	5686	50	0.4	87	2.8
11-Surgical	17529	5901	46	0.4	104	3.0
12-Psychiat	10905	1171	39	0.3	77	9.6
14/15-Eye	10676	3895	40	0.0	73	2.7
16-Gyn,obs	33784	8197	113	0.0	82	4.1
17-Gyn,obs	28106	6651	119	0.0	65	4.2
20-Orthop	9709	443	29	0.7	92	21.7
21-Orthop	8069	632	26	0.2	85	12.3
22-Pediatr	18230	7437	67	0.1	75	3.4
23-Pediatr	16464	4901	55	0.1	82	3.4
24-Dermat	3069	763	23	0.3	37	4.0
25-Neu.surg	8650	1523	31	2.4	76	5.9
ENT	6750	2880	20	0.1	92	2.3
OMF	5636	940	20	0.0	77	5.8
28-Chest	1637	180	14	0.0	32	9.0
29-Chest	4552	430	24	1.2	52	10.8
30-Medical	17350	6356	45	2.2	106	2.8
31-Medical	16056	6014	43	1.3	102	2.7
32-Neurolog	7383	1606	33	1.0	61	4.6
34-Gu-surg	5434	650	30	0.9	50	8.4
35-Onco	10554	1122	40	3.4	80	9.8
36-Onco	6967	1098	31	2.4	80	6.6
37-Oncosurg	6099	713	34	3.5	49	9.1
PBU	3915	481	13	16.6	83	9.4
SPBU	7547	1069	16	1.8	129	7.1
GBU	2789	261	10	0.7	76	10.3
CCU	2876	830	30	4.7	26	3.6
ICU-1	1841	482	5	8.4	101	4.5
ICU-2	1356	266	4	25.9	93	7.0
<b>Total</b>	<b>390105</b>			<b>0.9</b>	<b>80</b>	<b>3.8</b>

## CLINIC STATISTICS



	Clinics held	Total visits	Aveg/ clinic
Medical B	95	35995	379
Medical A	102	33954	333
Eye	279	33716	121
Dental	304	19555	64
Dermatology	184	18801	102
Rheumatology	208	17947	86
Diabetic	49	16490	337
Oncology	99	14158	143
Psychiatric	208	12992	62
Surgical A	98	12237	125
Surgical B	89	11976	135
Cardiology	101	11709	116
E.N.T	143	11521	81
Neurology	96	10621	111
Orthopedic	52	9995	192
Pediatric -22	87	7563	87
Antenatal 17	47	6228	133
OMF	71	6110	86
Antenatal 16	52	6046	116
Gynecological	95	5932	62
Growth & Dev	98	5034	51
Diabetic cent	26	3763	145
Pediatric -23	50	4878	98
Orthodontic	285	3624	13
Neuro Surgical	46	3126	68
Onco-surgery	78	1232	16
Genito-Urinary	43	1037	24
Cardiology Ref	47	981	21
Post MI	46	744	16
Heart failure	45	661	15
Rehab. Cardiac	39	311	8
<b>Total</b>	<b>3263</b>	<b>329223</b>	

\*BOR-bed occupancy ratio / \*\*ADOS-average duration of stay



**LOCAL PURCHASE OF DRUGS EXPENDITURE** (Y 2010)  
(descending order & above 1000/=)



Unit	Amount /=(Rs)
Medical ICU	79832
Pediatric Units- wd 22	61877
Operation Theatre A	42567
Surgical -wd 10	30429
Onco -Wd 35&36	21840
Cardiology Unit	15544
PBU	9697
Pediatric Units wd 23	8501
SICU	8325
Neurosurgery ward	5728
Eye Unit	4315
Medical B	3144
Surgical A	1800
Surgical B	1380

**TRANSFERS OUT**  
(Y 2010)



Hospital	No
TH Kandy	386
NHSL	141
LRH	127
TH Peradeniya	54
CI Maharagama	34
Other	128
<b>Total</b>	<b>870</b>

**TRANSFERS IN**  
**(Peripheral Hospitals)**  
(Y 2010)

Hospital	No of Transfers
<b>GH Monaragala</b>	<b>808</b>
<b>BH Mahiyanganaya</b>	<b>1152</b>
<b>BH Diyathalawa</b>	<b>792</b>
<b>BH Walimada</b>	<b>1681</b>
Passara	1162
Lunugala	503
Uwaparanagama	854
Meegahakiula	612
Atampitiya	406
Bibile	323
Wallawaya	204
Galauda	585
Matigathanne	280
Wawegama	311
Kandeketiya	437
Kandegedara	223
Springvalley	224
Hopton	225
Demodara	493
Ampara	13
Bandarawela	274
Kahataruppa	112
Nadungamuwa	164
Haputhale	78
Roberiya	186
Kandegolla	97
Badalkumbura	50
Giradurukotte	37
Bogahakumbura	153
Madagama	10
Ury	133
Koslanda	111
Buththala	35
Mirahawaththa	136
Other	405
<b>Total</b>	<b>13269</b>